



Installation Manual

Commercial and Industrial Line

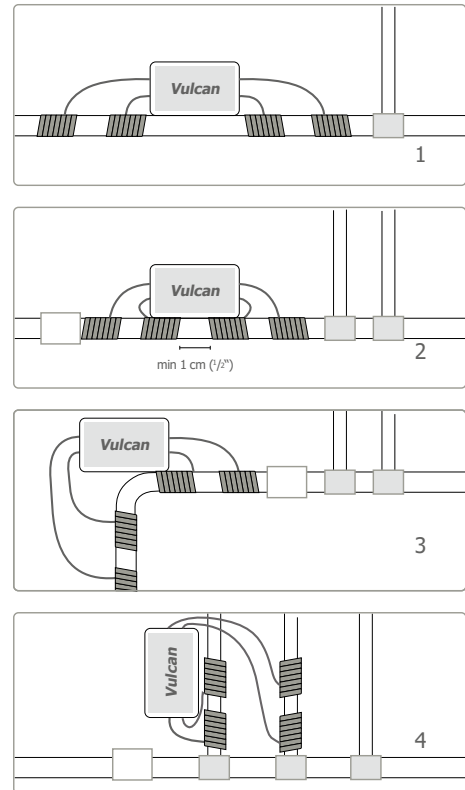
Installation Notes

1. Protect the electronic unit, the impulse bands and the power supply against humidity and water.
2. Use the provided electronic switching adaptor only.
3. Do not cut the impulse bands nor the 36 V power cord of the power supply unit.
4. Do not remove the end caps or the impulse band insulation.
5. The operating temperature of Vulcan ranges from -13°F to 122°F (-25°C to +50°C).
6. Clean the device with water only.
7. Temperature peaks on heating element surfaces should not exceed ~203°F (~95°C).

Installation Examples

1. For optimal water treatment Vulcan is best installed near the water meter or at the main water supply.
2. The impulse band windings can be placed on the left side, on the right side or underneath the electronic device. Leave a safe distance of at least ½" (1 cm) between the bands.
3. Vulcan can be installed vertically, horizontally or at any other angle. If there is no space available on the pipe the electronic block can also be wall-mounted.
4. In case of limited space the windings can be placed partly on the main pipe and partly on the distributor pipe.

All these different installations are possible because the treatment impulses extend over several meters to either side of the pipes.



Installation Instructions

1. Put the two cable ties through the fixing holes at the bottom of the electronic device. Now place the device onto the pipe. Use the cable ties to latch the device to the pipe.
2. Plug one of the impulse bands into the bottom impulse band in-jack and latch it to the pipe using another cable tie.
3. Wind the impulse band around the pipe producing a coil. Make sure you wind the band tightly to the pipe and place the windings close to each other.
4. Latch the end of the band to the pipe using another cable tie. Now plug another impulse band into the in-jack on the opposite side and repeat the procedure.
5. Plug another impulse band into the next impulse band in-jack and, according to the device type, repeat steps 2 - 4 until all impulse bands are in use. All impulse bands must be wound tightly around the pipe and fastened with cable ties.
6. **First plug the connector into the upper right in-jack of the device and then connect the power supply unit with an electrical outlet.**
7. Programming: Set the program by touching the twin metal sensors on the left side simultaneously.

